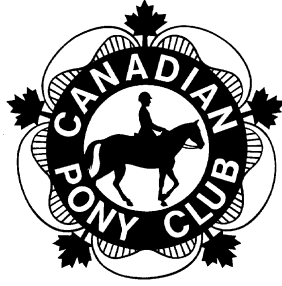


CANADIAN PONY CLUB



D LEVEL WRITTEN/ORAL FALL 2010

References:

MH Manual of Horsemanship - 2003 - 12th Ed.
USPC USPC D Manual - 1994

Total Marks 35 Pass 23 65%

[5] Part 1 Circle the best answer.

1. One tool used to groom your pony is:
a) body brush b) halter c) bit
USPC p 169

2. The back of the saddle is called the:
a) pommel b) seat c) cantle
USPC p 248

3. When leading your pony you should use:
a) a halter & lead shank b) a rope around his neck
c) just pull on his mane
USPC p 135

4. A good treat for a pony is:
a) a carrot b) a brush c) sugar
USPC p 186

5. The best knot to use when tying your pony is:
a) square knot b) quick release knot c) slip knot
USPC 144

[5] **Part 2 True or False**

1. It is very important that ponies get plenty of water. _____
USPC p 186
2. The hocks are found on the front legs. _____
MH frontispiece USPC p 231
3. Ponies should have their feet trimmed every 4 - 5 weeks. _____
USPC 205
4. The pad under the saddle is called a numnah. _____
USPC 272
5. A pony is usually mounted from the off side. _____
MH p 15

[5] **Part 3 Fill in the blanks.** Use the words at the bottom of the page.
You will have some words left over.

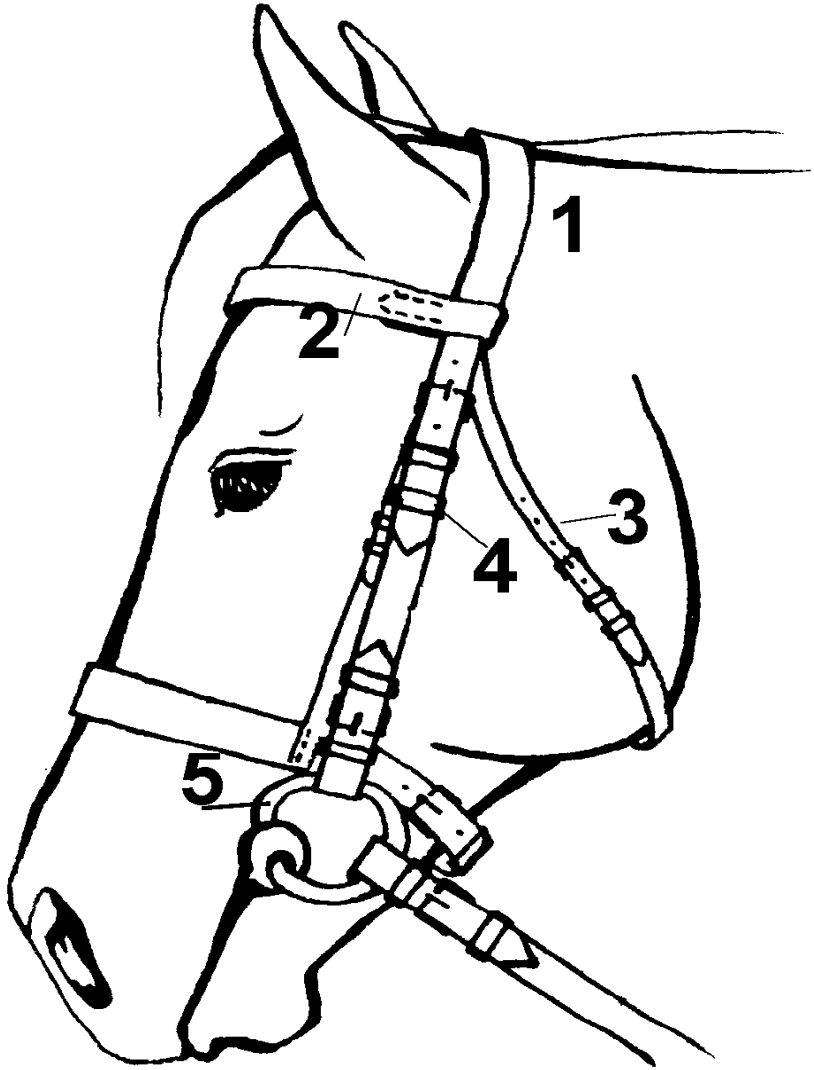
1. Use a _____ to clean out your
other brushes when grooming your pony.
MH p 200
2. The _____ are found between the neck and the back.
MH frontispiece.
3. Use a _____ brush to remove heavy dirt from your pony's coat.
MH 200
4. After your lesson, you should _____ your pony until he is cool.
MH page 155
5. Always check that your _____ is tight before mounting.
MH 150

curry comb
water
girth

shoulder
withers
stirrup

dandy
walk

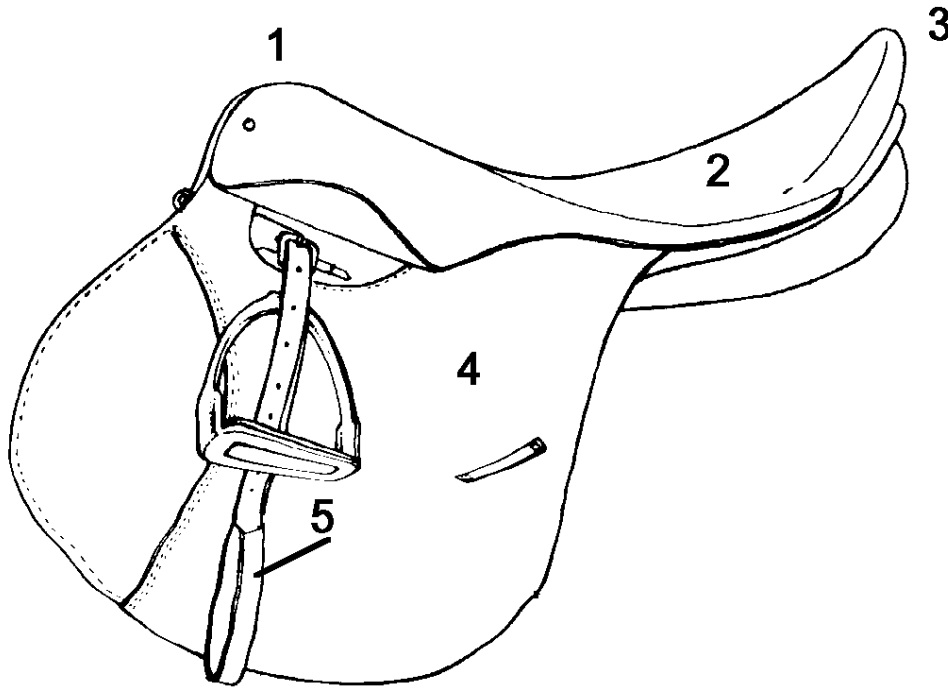
[5] Part 4 Parts of the Bridle Name the numbered parts



—

1. _____
2. _____
3. _____
4. _____
5. _____

[5] **Part 5 Parts of the saddle.** Name the numbered parts.



1. _____

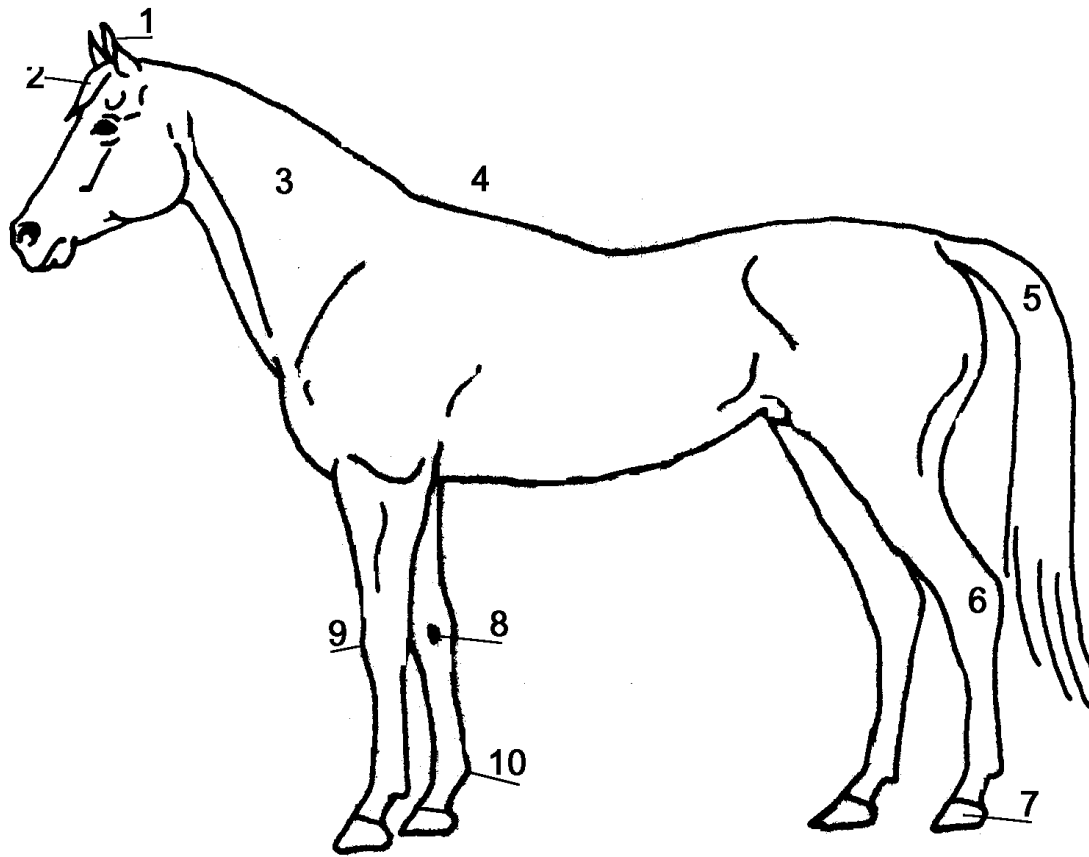
2. _____

3. _____

4. _____

5. _____

[10] **Part 6** Parts of the horse. Name the numbered parts.



1. _____

6. _____

2. _____

7. _____

3. _____

8. _____

4. _____

9. _____

5. _____

10. _____